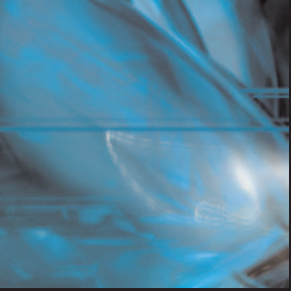




# Monitor and Control

Managing Documents Throughout the Enterprise



Throughout any enterprise, applications on various platforms generate business-critical documents that need to be printed. That's where problems can occur. Even the most reliable printers have errors—they run out of paper or toner, their covers are left open, paper trays aren't inserted correctly, they get powered off, or network problems may develop. At those times, system administrators, computer operators and end users need a tool that enables them to remotely diagnose and resolve printing problems.

This ideal management tool should offer users browser-based access to track their output from capture to final delivery. It should also include flexible security so system administrators can control all documents and printers in the enterprise while restricting access to specific documents, devices and system commands.

For more than 40 years, the world's leading businesses have relied on LRS® solutions to help them efficiently manage the distribution of computer-generated documents throughout the enterprise. Since that time, LRS has developed a suite of products to form a complete Enterprise Output Server. LRS offers Web-based tools for monitoring and controlling document printing across multiple platforms as well as 3270 clients for TSO, ISPF, and VTAM.

## **Monitor & Control**

Organizations around the globe have implemented LRS solutions for monitoring and controlling their enterprise-wide printing environments. VMCF Web Access and DMCF Web Access provide a comprehensive, real-time view of the document capture, management, and delivery components of the LRS Enterprise Output Server.

## **Web Browser Viewing**

The LRS solution's simple Web browser interface eliminates the need to install additional software on workstations. It offers the capability to view output on the JES spool before it prints, view print jobs submitted to the Enterprise Output Server from multiple platforms, and monitor the status of output devices.

The screenshot displays the VMCF Web Access interface. At the top, there's a navigation bar with 'Return', 'Refresh', 'Top', 'Page Up', 'Page Down', and 'Bottom' buttons. Below that, a 'VPS Printer List' section shows a table of printers with columns for Member Name, LUName, Commtyp, TCP Disconnect, and TCP Address. A search bar and 'View: VPS-TCPIP PARAMETERS' are also visible.

The main content area shows a 'Printer Mask' table with columns: Member Name, LUName, Commtyp, TCP Disconnect, and TCP Address. Below this is a 'VMCF Printer Selection List' window with a command prompt interface. It shows a list of printer names and their status, such as 'DEMOBANYQ DEMOBANYQ NONE IDLE D-DEMOBANYQ' and 'DEMOBEPSP DEMOBEPSP NONE IDLE D-DEMOBEPSP'. The list includes various printer models like DEMOBIP1, DEMODRS, DEMOE0V1, DEMOE0V2, DEMOLP1, DEMOLP2, DEMOM11, DEMOM12, DEMOM13, DEMOM14, DEMOM15, DEMOM16, DEMOM17, DEMOX180, and PSF. The status for most is 'NONE IDLE', while some are 'NONE DRAINING'.

## VMCF Web Access and 3270 Interfaces

### Device Information

Utilizing the bi-directional communication capability built into many of today's printers, our Monitor & Control solutions gather and display useful information about print devices. Printer status messages, such as Cover Open, Paper Jam, Out Of Paper, can be displayed so the user has real-time knowledge of the device status, especially devices in error status. Users can view device attributes and can directly access the browser interface that many devices offer for setup and administration.

### Secure Interface

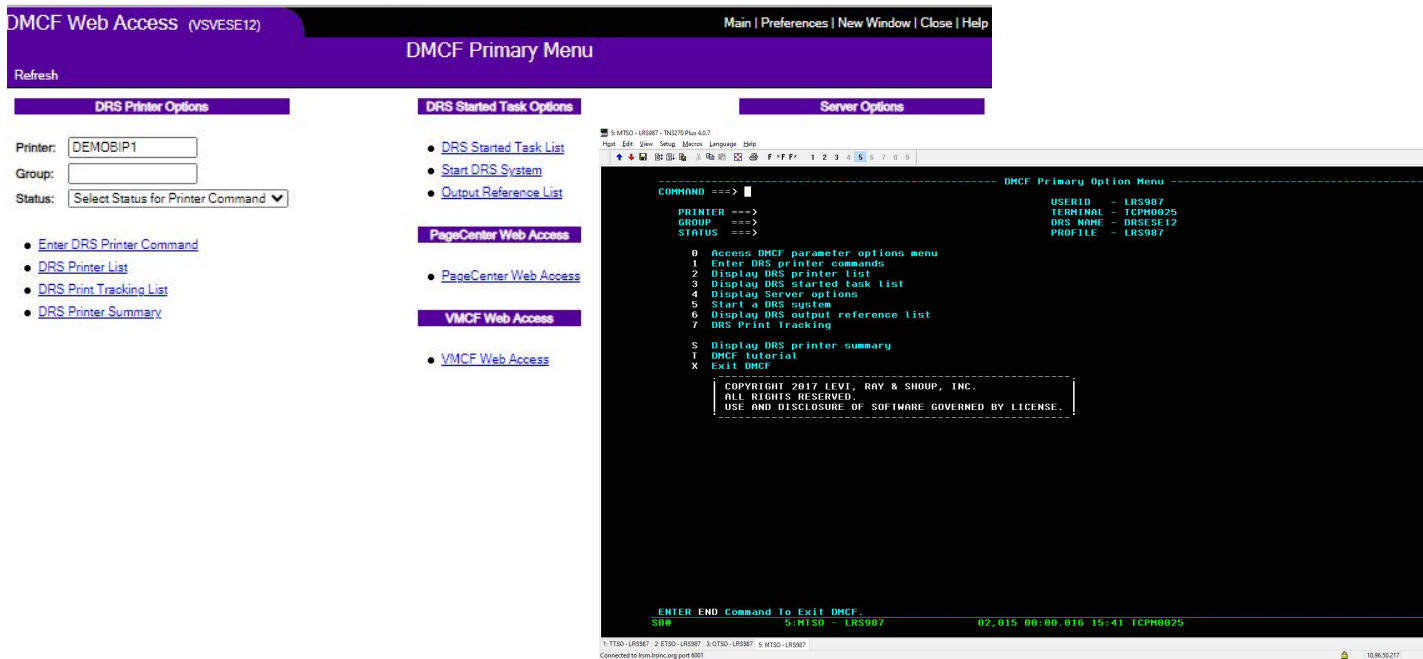
All LRS Monitor & Control solutions provide security so only authorized individuals have access to document and device control. Administrators can set security attributes for individual users or groups of users, granting them access to view specific documents and output devices and enabling them to issue only specific system commands.

### Alert Information

By giving administrators, operators, and end users a view into the Enterprise Output Server, Monitor & Control facilities make it possible for everyone to know when and where problems arise in the system. LRS Monitor and Control solutions can send alerts to administrators in the form of email notifications about system level events including system termination and error conditions. Our solutions also provide alerts that are available via the Web interface when individuals log on.

### Customizable Interface

For optimum usability, LRS Monitor & Control solutions offer customizable browser interfaces. System administrators can incorporate customized messages and instructions for their users and can take advantage of HTML templates included with our solution to incorporate their own logos and color schemes into the system. These features allow our control facilities to become integrated components of your intranet site. National language support enables global organizations to provide an understandable interface for offices in multiple countries.



## DMCF Web Access and 3270 Interfaces

### Accounting Information

As the LRS Enterprise Output Server tracks documents from creation to delivery, it also keeps track of user activity. The Enterprise Output Server includes components that can keep track of printer usage to show who's making the most use of printing resources. The server can compile statistics including the number of documents produced by a specific printer, and even the number of lines and pages the printer has handled. This allows the organization to track which users are producing the largest volume of documents and use this information for "chargeback" or budgeting purposes.

### Monitor & Control Tools

VMCF Web Access enables anyone with access to a Web browser to easily monitor and control document printing from any platform. Individuals can display lists of the printers they are authorized to control; view printer status, including messages from TCP/IP-connected devices that support the LRS bi-directional printer communication feature; and issue VPS commands. VMCF Web Access users can also view output before it prints using the optional Report Browse component.

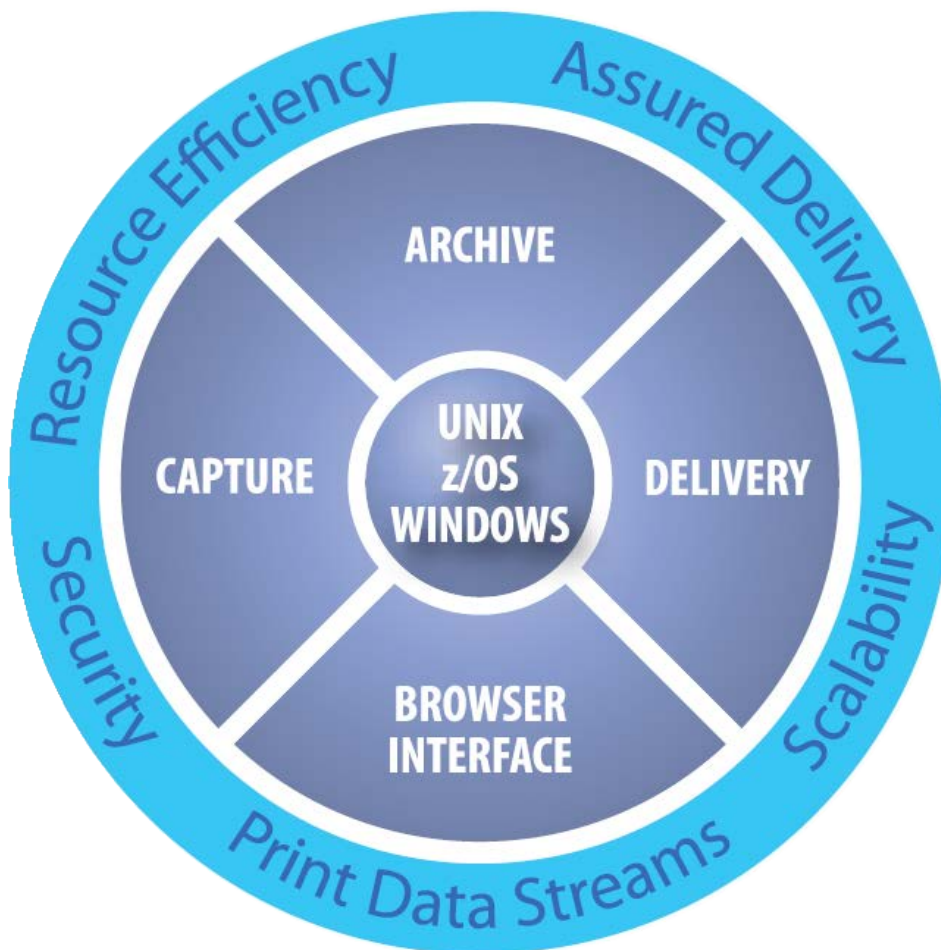
DMCF Web Access enables anyone with a standard Web browser to monitor output submitted to the Enterprise Output Server, regardless of the platform where it originated. DMCF Web Access users can view the job's current status (including Waiting, Printed, Purged, Printing Error), along with the date and time that the job was created, printed, or purged.

monitor manage

# Enterprise Output Server

LRS offers the software solutions which integrate seamlessly to provide a complete Enterprise Output Server—a single, highly scalable, reliable server on the most stable platform available. LRS solutions offer the flexibility to implement only the required server components, including document capture, archive, delivery, and a consistent

user interface regardless of the user's platform. Organizations can design an Enterprise Output Server to capture documents from all the platforms they use and deliver documents to all the destinations on the network, including printers, fax servers, email addresses and web browsers.





## The Enterprise Output Managers

LRS has been providing solutions for the evolving Enterprise Output Management needs of organizations around the world for more than 40 years. More than half of the Fortune 500 and Fortune 500 Service companies rely on our industry-leading software for capturing documents and delivering them to diverse network destinations.

As the recognized Enterprise Output Managers, we are dedicated to constant innovation as we continue to develop the output management solutions that meet today's needs and anticipate tomorrow's demands.

### Levi, Ray & Shoup, Inc.

2401 West Monroe Street • Springfield, Illinois 62704  
Phone: 217-793-3800 • [EOMinfo@LRS.com](mailto:EOMinfo@LRS.com)

AUSTRALIA Phone: +61 2 9922 3800

GERMANY Phone: +49 (0)811/99 73 90

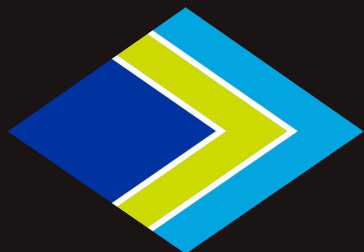
ITALY Phone +39 02 939 06150

SINGAPORE Phone: +65 6480 6547

SPAIN Phone: +34 91 758 13 40

FRANCE Phone: +33-1-72-76-8031

UNITED KINGDOM Phone: +44 (0)1242 537 500



[www.vps.com](http://www.vps.com)