

LRS Workplace Printing Solutions

Eliminate Windows Print Servers, simplify driver management

Simpler = Better

Purchasing, deploying, and supporting large numbers of Windows print servers is both time-consuming and expensive. One way to reduce IT cost and simplify your print infrastructure is by replacing Windows print servers with a single Output Management solution.

LRS® Workplace Printing software lets end users quickly find and add printers to their workstations using a self-service portal. Our seamless middleware platform handles all aspects of Windows printing and enables support for accounting as well as mobile and virtualized environments.

The answer is LRS Workplace Printing Software

LRS offers multiple ways to address your workplace printing challenges. The VPSX/Workplace™ and VPSX/DirectPrint™ solutions help you establish centralized management for all Windows printing that can:

- Print from any Windows desktop
- Quickly manage printer drivers, queues, and devices
- Solve print issues using an intuitive web interface
- Easily expand to support line-of-business applications and virtualized desktops

AT A GLANCE



VPSX/Workplace

Provides enterprises with a hybrid print architecture that supports both spool-based and Direct IP printing methods to address the operational requirements of large organizations as well as small, remote office locations.

VPSX/DirectPrint

Captures documents from Windows applications and delivers them to any network printer using the Direct IP print method.

LRS Workplace Printing Software: Features & Benefits

Features	Benefits
Centralized, scalable solution to replace many individual Windows Print Servers	Save money by eliminating redundant server hardware; manage more printers with fewer FTEs
Efficient single process/multi-threaded design; single system can drive 1000's of printers without CPU or memory constraints	Improved system stability and less downtime; frees up processing cycles for other applications and processes
Automated print driver management & deployment	Increased IT and user productivity
Web-based portal interface to enable user self-service (locate & define printers, etc.)	Fewer support calls; improve end-user productivity, mobility, and overall printing experience
Support for centralized, spool-based* print management as well as Direct IP printing	Better network bandwidth optimization for maximum stability and system performance

* LRS Spool feature included only with VPSX/Workplace product

LRS Printer Portal – simplified device location and configuration

Both the VPSX/Workplace and VPSX/DirectPrint products include the LRS Printer Portal. This intuitive, web-based interface makes it easy for users to locate and connect to nearby print devices while automatically provisioning the correct print driver.

Result? Improved user productivity, reduced help desk calls, and fewer printing failures.

The screenshot displays the LRS Printer Portal interface. At the top, there is a search bar with the text "Search on printer name, description, department or location". Below the search bar, the interface is divided into two main sections: "PRINTER FEATURES" and "FLOOR PLAN".

PRINTER FEATURES: This section includes several filter options, each with a radio button:

- Color (represented by colored circles)
- Print on both sides (represented by a printer icon)
- Staple (represented by a staple icon)
- Secure Print Release (represented by a lock icon)
- PersonalQ (represented by a cloud icon)

LOCATION: This section includes filter options for location:

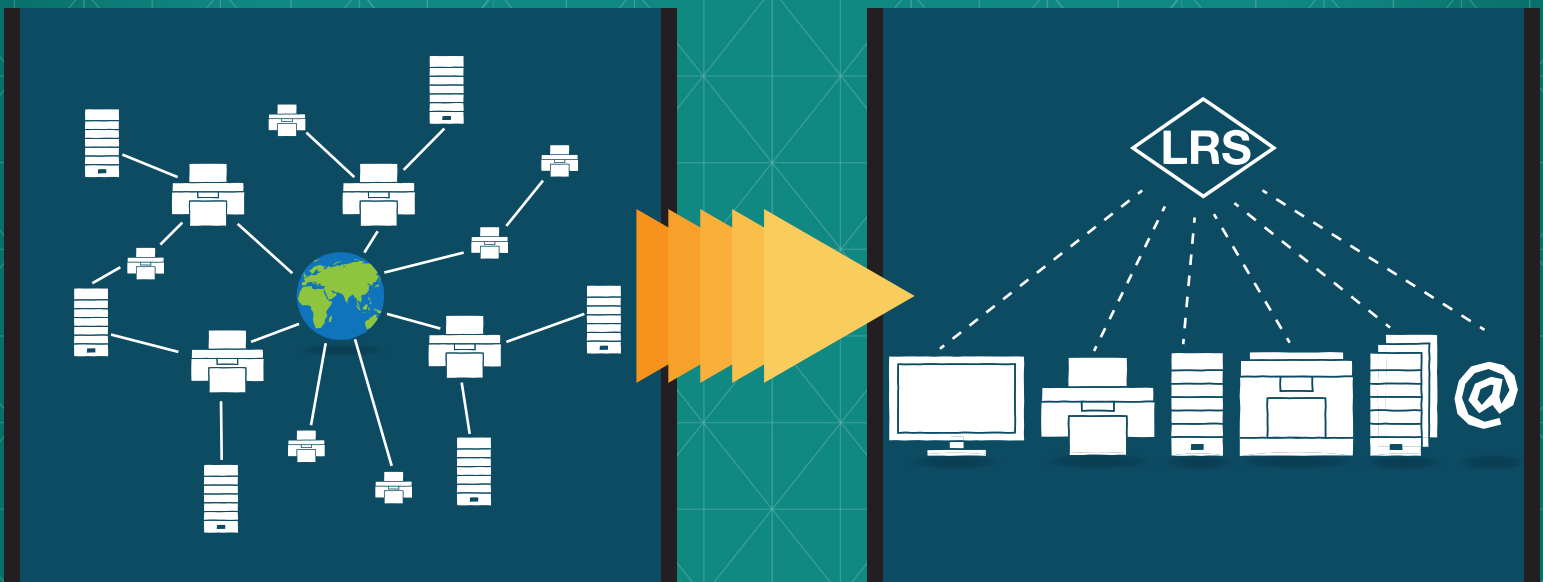
- All locations (represented by a globe icon)
- USA (represented by a location pin icon)
- Springfield (represented by a location pin icon)
- Building 7 (represented by a location pin icon)

FLOOR PLAN: This section shows a detailed floor plan of a building with various rooms and printer locations. The printer locations are marked with colored icons (red, green, blue) and labeled with printer IDs and names. A tooltip for printer P287 is visible, showing details:

- Printer ID: P287
- Name: No-Response
- Location: Purchasing Office - Front Desk
- Features: Color, Print on both sides, Staple, Secure Print Release, PersonalQ

 Other visible printer labels include PS51269 (ZEBRA DEMO), P189, PS11124, PS74139, PS51123, P1HP4540, PS74135, and LHP4345. The floor plan includes rooms such as Engineering Lab, Janitorial/Mechanical, Distribution 425a, Women, Men, and various numbered offices (e.g., 453, 452, 451, 450, 449, 448, 600, 601, 602, 603, 615, 616, 617, 618, 619, 611, 612, 613, 614, 620, 621, 622, 623, 625, 626, 627, 623 H, 634, 534, 533, 532, 531, 530, 528 H, 527, 526, 525, 523 H, 522, 521, 520, 514, 513, 512, 511, 510, 503, 502, 501, 500).

At the bottom of the interface, there is a "PRINTERS" label and a page number "1 - 31 (31)".



LRS Workplace Printing solutions simplify complex Windows Print Server environments, establishing a centralized management system for all output

Integrated, feature-rich, highly extensible

Both the VPSX/Workplace and VPSX/DirectPrint products are based on the proven VPSX Enterprise™ solution, which manages documents from line-of-business applications as well as user desktops. Used alone or in conjunction with various extensions in the VPSX® product family, the solutions support:

- **Centralized print management** for both physical and virtual Windows desktops
- **Secure pull printing** that reduces wasted output by requiring users to authenticate identity before releasing documents for print. Integrates with LRS and third-party pull print solutions.
- **Mobile printing** from iOS, Android, and other devices
- **Print Tracking & Accounting** for improved security and cost control
- **Formatting and bundling** capabilities to enhance document appearance and usability

Scalable Standards-Based Architecture

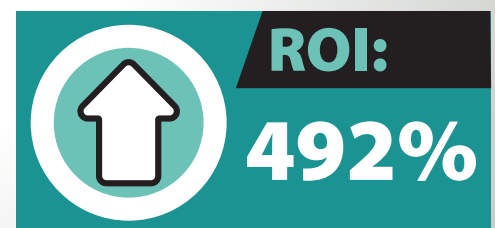
Printers, applications, and computing hardware change over time. Your output management infrastructure should easily adapt to change, not create the need for more. That's why LRS Workplace Printing solutions are scalable and hardware-vendor agnostic, letting you adapt to these changes over time without impacting document-related business processes.

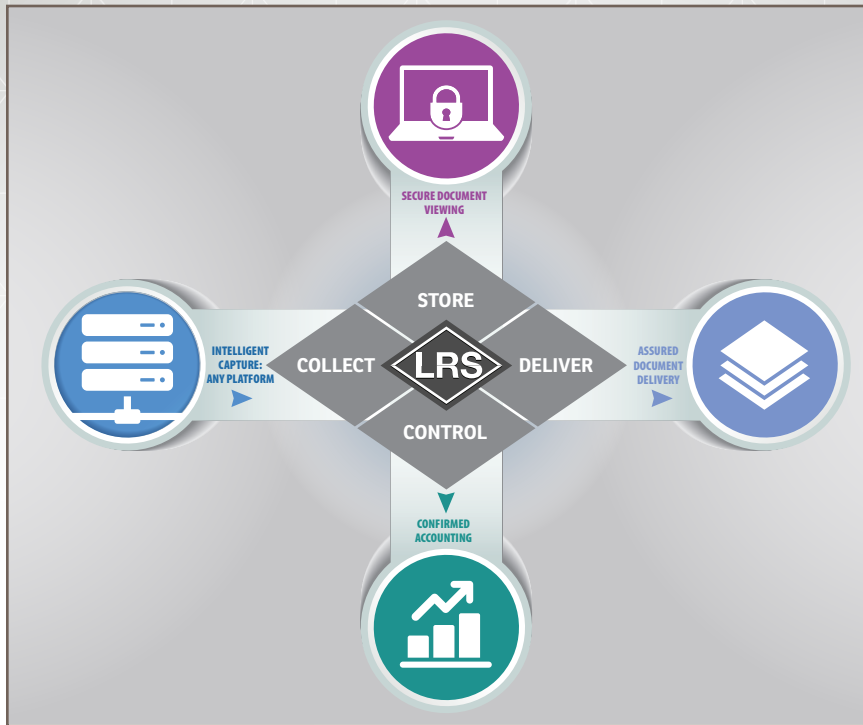
What does that mean for your business? Our solutions help you:

- Protect your existing investment in printers, platforms, and other infrastructure by building on industry-standard protocols and data formats instead of proprietary, vendor-specific technology
- Save money by supporting all major device types and vendors, letting you negotiate hardware contracts based on price and business terms rather than proprietary technologies

- Greatly expand the number of print devices and users in your network without additional print servers, thereby minimizing cost and IT burden

The ability to support large numbers of output devices from a single point of control improves the productivity of end users and IT staff. A recent study showed that users of LRS output management software experienced an average five-year ROI of 492% and a payback period measured in months, not years.





LRS Output Management software collects documents from any application and makes them available to stakeholders throughout the organization in hardcopy and electronic form.

The LRS Enterprise Output Management Solution

LRS Workplace Printing software works with the full LRS Enterprise Output Management solution; a robust, scalable platform that helps organizations reduce costs, increase efficiency, and improve service to internal & external stakeholders.

With more than 30 years of experience and over 5,500 installations worldwide, LRS maintains a singular focus on providing the world's most reliable and feature-rich output solution. For more information about LRS solutions, click here or contact your LRS account executive.

Discover the benefits of LRS Workplace Printing.

Visit www.LRSOutputManagement.com to learn more about LRS output management solutions.



Levi, Ray & Shoup, Inc.

www.LRSOutputManagement.com

© Copyright 2016 Levi, Ray & Shoup, Inc. All rights reserved. LRS, the LRS diamond logo, and VPSX are registered trademarks and VPSX Enterprise, VPSX/Workplace, and VPSX/DirectPrint are trademarks of Levi, Ray & Shoup, Inc. Microsoft and Windows are registered trademarks of Microsoft Corporation in the United States and other countries. IOS is a registered trademark of Cisco Systems, Inc. and/or its affiliates in the U.S. and certain other countries. Android is a trademark of Google Inc. All other trademarks are the property of their respective owners.